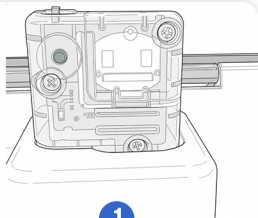


Quick start guide for UDC



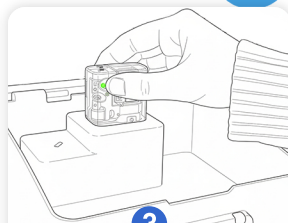
1

Remove DryBUDDY from pouch and install completely into DryBUDDY pocket.



2

Plug in the provided charging cable to internal charge port, and then plug the charging cable into your charging case.



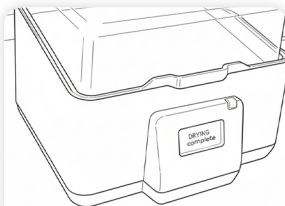
3

Press Green Start button.



4

Close the Lid.



5

Device will say "Dry Complete" when done. Most dries complete within 3-5 hours.

